



*Jin G. Kam*



*see the music ...*

---

*listen to the art...*

Jin G.Kam : SELECTED WORKS

ジン G・カム作品集

2003 年 5 月 15 日：初版発行

Published and distributed in Japan by Novo Fine Arts

Special thanks to :

Adeline Fu

Clair Liu

Innovations Art Group Inc., CA

Lithoteck ,CA

2017 年 5 月 15 日：改訂電子版発行

著作：ジン G・カム

ウェブ編集・制作：岡部孔明

アートディレクション：岩崎真紀子

スーパービジョン：清原正明

ジン G・カム日本代表：(株)トレードウインド

フリーダイヤル：0120 - 875 - 407

URL:[www.tradewind-novo.jp](http://www.tradewind-novo.jp)



# *Jin G. Kam*

---

*Selected Works*

*1989 -2003*

*USA*

**Jin G. Kam** was still a Child of five in his native Shanghai, China when his unique pencil sketches attracted a teacher specially educated in European painting techniques. At about same time he also learned to play the violin and piano. By the age of twelve Jin G. had advanced to private painting lesson from the renowned teacher Master Yu. He taught him for the next ten years using methods influenced by the Social Realism tradition found in Russian painting.

The Cultural Revolution disrupted Jin G.'s life in 1966. As a teenage boy he was required to leave home and work in the cotton fields of Anhui. The countryside taught him the meaning of hard physical work and he attained a life-long respect for the honest humility of the country people. But, Jin G. continued his lesson with Master Yu throughout the years of Cultural upheaval. He also became a professional violinist and played in the Lu San Orchestra. Still, for eight years Jin G. worked six months at a time in the Anhui cotton fields.

1977, the Cultural Revolution ended. The prestigious Zhejiang Academy of Fine Art in Hangzhou which is now know as the China National Academy of Fine Art, one of the finest art school in China, was reopened. Jin G.'s artistic talent earned him admission as one of few students accepted out of thousands applicants. During this time, he immersed in the new music and contemporary art that was emerging from the west. He discovered 20th Century American artist such as Morris Louis, Rothko, DeKooning, Pollack, and Kline. The spectrum of color bursting from the image created by these innovative artist mesmerized is eyes and inspired his mind to further explore the world of art.

After receiving his degree in fine art, Jin G. was invited to teach at the Shanghai University of College of Fine Art. By 1987 Jin G. yearned for new ideas and new cultures, he went to Tokyo. In 1989, Jin G.'s search for knowledge eventually brought him to Southern California to pursue a masters degree.

He arrived in San Diego, where he continued to create musical paintings. An art publisher saw an exhibition of Jin G.'s paintings and this led to the publishing of Jin G.'s first limited edition reproduction. That was followed by series of painting which featured the maestro Leonard Bernstein.

It is in America where he delved into a deep exploration of the music of Jazz and Blues. The alluring nature of Jazz and the expressive quality of the Blues drew him into its grasp. Jin G. has created magnificent images of the legendary jazz and blues artists such as Billie Holiday, Louis Armstrong, Charlie Parker and Miles Davis. In each painting, he captures the mood of the moment and essence of the musical artists.

Since introducing his art to the art scene, Jin G. Kam's painting has established wide acclaim both nationally and internationally. He has participated in exhibition across the United States, Europe, and Asia. His artworks belong in several permanent collections, such as the Steinway and sons and Charlie Parker Museum. His magnificent artworks have brought special affiliation with the Miles Davis Estate, Louis Armstrong Education al Foundation, and the Leonard Bernstein Education Through the Arts Fund. Jin G. has also been commissioned to Paint a series of tributes to honor the memory of Billie Holiday and Charlie Parker and was a specially commissioned artist to honor Lena Horne to benefit the Society of Singers at Lincoln Center.

Jin G. Kam's unique sensibility to interpreting music performance is unsurpassed. His enduring passion and extensive knowledge of music allows him to continue to create extraordinary imagery. The art of Jin G. Kam is timeless and forever, possessing the qualities of strength, charisma, and charm.

*"Such Visual translation is possible only because Jin G. immerses himself in the music-mentally, emotionally, almost physically."*

Elizabeth Kaibel  
Editor of U.S. Art Magazine & Mpls.st.Paul Magazine

*"The exhibited works of Jin G. Kam diverted people's attention to a different world of art-hearing by seeing. Through his unique talent, temperament and technique, Kam transposes melodies from ear to image."*

Joy Wild  
Art writer, Dimensions Magazine

*I invite you to enjoy the beauty, power, and drama of the art of Jin G. Kam. He is a wonderful representative of the vibrant artistic community which flourishes in San Diego, and I am proud that he is able to share his talent around the world."*

Maureen O'Connor  
Mayor of San Diego

## ***An Artist's Evolution***

*I remember Jin G. arriving at the San Diego airport from Shanghai in 1989. He was already in his 30s, having never seen the west. Jin G. had a lot of new experiences awaiting him, while living in an artist's loft, a few feet away from the Pacific Ocean. He could smell and hear the ocean's many moods. He had begun his new life.*

*Jin G. surrounded himself with the sounds of classical music, as was his Shanghai habit, and his paintings became those sounds as they flowed through his body, his heart and mind. One of those earlier and well-known paintings, *Ballad*, according to Jin G.'s words, "is a tribute to solo pianists (Horowitz) and my own visual interpretation of Chopin's music in this century." With *Ballad*, Jin G.'s art exploded onto the American scene, as it touched art lovers and won accolades in exhibitions nationwide.*

*He went onto paint the passion and the movement of sounds that he heard in the music of many famous musicians. Several of Jin G.'s paintings were inspired by Leonard Bernstein. "I wanted to capture the energy and drama which characterized Bernstein as a rare individual talent who created music which was uniquely American," according to one of Jin G.'s descriptions. The emotion was always the first great impact of his paintings, leading to a proper motto: "see the music...listen to the art."*

*His new life exposed him to the jazz scene, from which he took inspiration. His colors became brighter and the sounds of this new world became large sweeps on the canvas even more impressionistic yet contemporary - in other words, happy and free. In speaking of jazz, he said "Neon charges the air and creates a light that casts shadow in the alleys of the tremendous buildings and the jazz man's loneliness. His jazz speaks for me standing lonely and new in the middle of so much confused energy. The music pours into my ears and soul directly out of this uniquely American urban landscape. I can see and hear the trumpet's notes blown into the night puzzle by men like Miles, Dizzy, and Louis."*

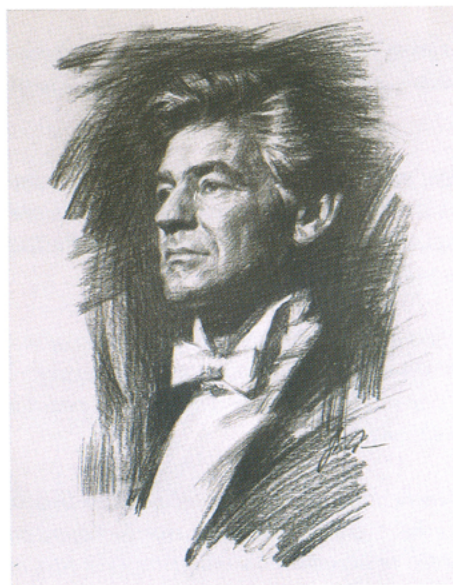
*Jin G.'s art continues to evolve. Yet we still see motion and movement with color and lines, now in his studies of ballet performers. Jin G. found that ballets and their stories and movements, deeply moved him. Many artists over history have tried to show the spirit, the tragic emotion, in the performances of ballerinas. Through Jin G.'s lifetime study of the relationship of literature such as that of Shakespeare to fine art and music, it is a natural outpouring of his creativity to paint beautiful performers in evoking the spirits of the human experience. In the literature of Shakespeare he found his own soul touched by both the sadness and joy of life, and he spoke of this inspiration in his attempt to broadly, abstractly, project Shakespeare's emotion in his selection of the ballerina's pose and movement. Not to express realism or fine details as have some other artists, but through body language to convey the deep passion of life.*

*Jin G.'s selection of colors is full of meaning as significant symbology in his literature-in-painting. His drawings, the lines, the colors, are used to convey the emotions of tragedy and sadness and joy. Jin G. sees his own life and body as an immersion in playing and listening to music. He sees the story and creates it through his soul in sweeping colors. His works of art reflects his way of looking at the world with all its social changes, as he tries to catch traditional values placed in the midst of the new ones.*

*When I see Jin G.'s paintings, I am always overcome with a wave of emotion. I can see the dangers in motion and hear the passion of music of great classical ballets. Passion, music, dance remain the themes in Jin G.'s art. As with great environmental events that we experience, that we see and hear-such as an ocean storm, or springtime's gentle budding trees and flowers-so Jin G.'s art can make me smile or cry tears of the beauty and the power of his great creative gifts. I experience in my heart the sounds and the images of the performers whenever my eyes gaze upon his beautiful art pieces.*

*Carolyn Wardell*





クラシカル

---

*Classical*

*At his last New Year's concert  
performance, Von Karajan  
conducted Prokofiev's first  
symphony, "Classical  
Symphony in D Major."*



アレグロ

---

ALLEGRO

2001 OIL ON CANVAS 60" × 28"





ホロヴィッツ

---

HOROWITZ

1996 OIL ON CANVAS 28" × 28"

*Bernstein is depicted as an intense emotional maestro conducting his own composition. I wanted to capture the energy and drama which characterized Bernstein as a rare individual talent who created music which was uniquely American.*



カデンツァ

---

CADENZA

1995 OIL ON CANVAS 42" × 40"



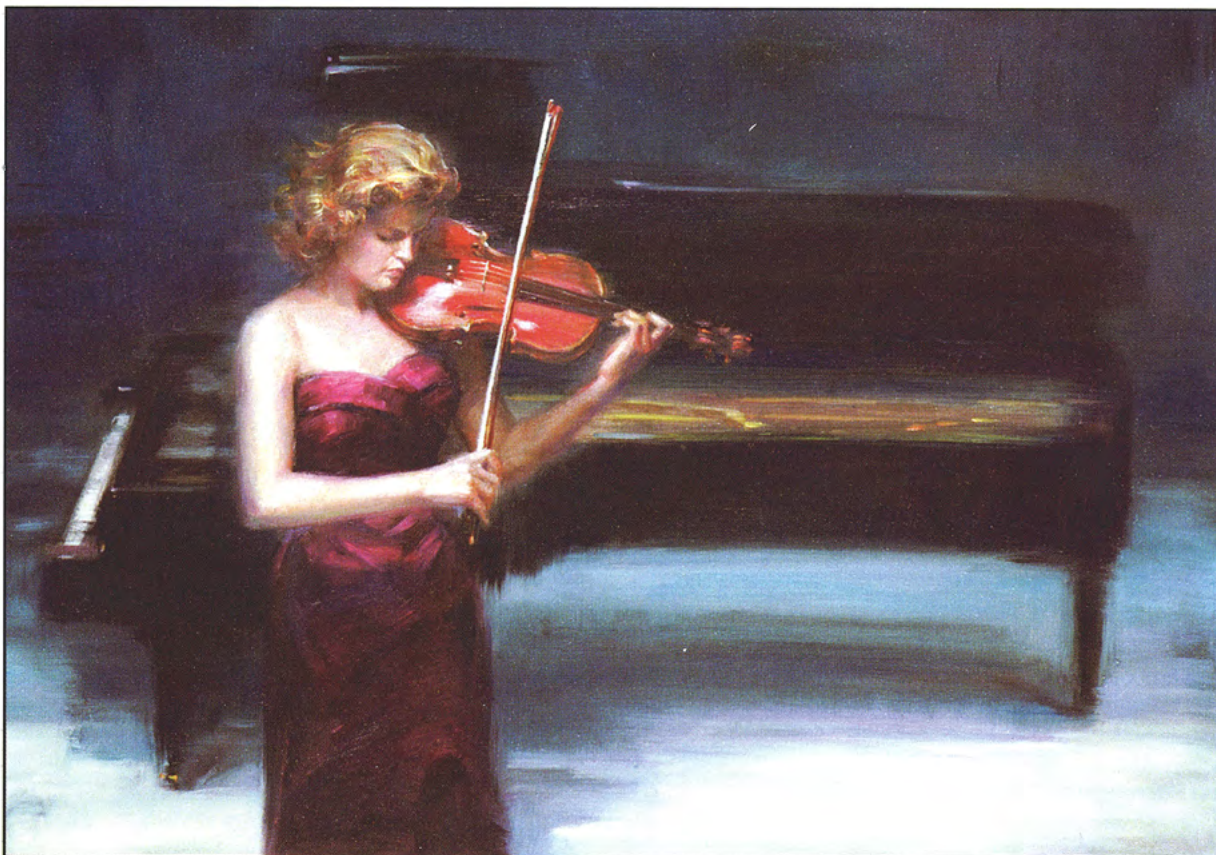


キャンディード

---

CANDIDE

1992 OIL ON CANVAS 54" × 36"



カプリス

---

CAPRICE

1991 OIL ON CANVAS 48" × 36"





b フラットマイナー

B-FLAT MINOR

1992 OIL ON CANVAS 36" × 20"

*I was inspired in "Piano  
Concerto" to express  
deeply emotional abstract  
movement and at the same  
time letting the eye  
perceive a visual balance  
which is a tribute to the  
intricacy and drama of an  
orchestra, a conductor,  
and a solo pianist who are  
able to dramatically  
collaborate in their  
musical interpretation.*





ピアノコンチェルト

---

PIANO CONCERTO

1991 OIL ON CANVAS 36" × 48"



ペンシヴ (哀愁)

---

PENSIVE

1990 OIL ON CANVAS 30" × 40"





フィルハーモニック

---

PHILHARMONIC

2001 OIL ON CANVAS 60" × 30"



アデリン

---

ADELINE

1998 OIL ON CANVAS 22" × 30"





カルテット (四重奏)

---

QUARTET

2003 OIL ON CANVAS 40" × 17"

*"Ballad" is a tribute to solo pianists and my own visual interpretation of Chopin's music in this century. I want to strive to create an image that is dramatic and intense while at the same time retaining a sense of controlled and subtle form.*



バラード

---

BALLADE

1989 OIL ON CANVAS 48" × 30"





オーフラ

---

OFRA

1996 OIL ON CANVAS 28" × 30"





アンダンテ

---

ANDANTE

1992 OIL ON CANVAS 48" × 48"



フロム ザ ニューワールド

---

FROM THE NEW WORLD

1993 OIL ON CANVAS 36" × 48"





セカンドムーヴメント

---

SECOND MOVEMENT

1993 OIL ON CANVAS 60" × 34"



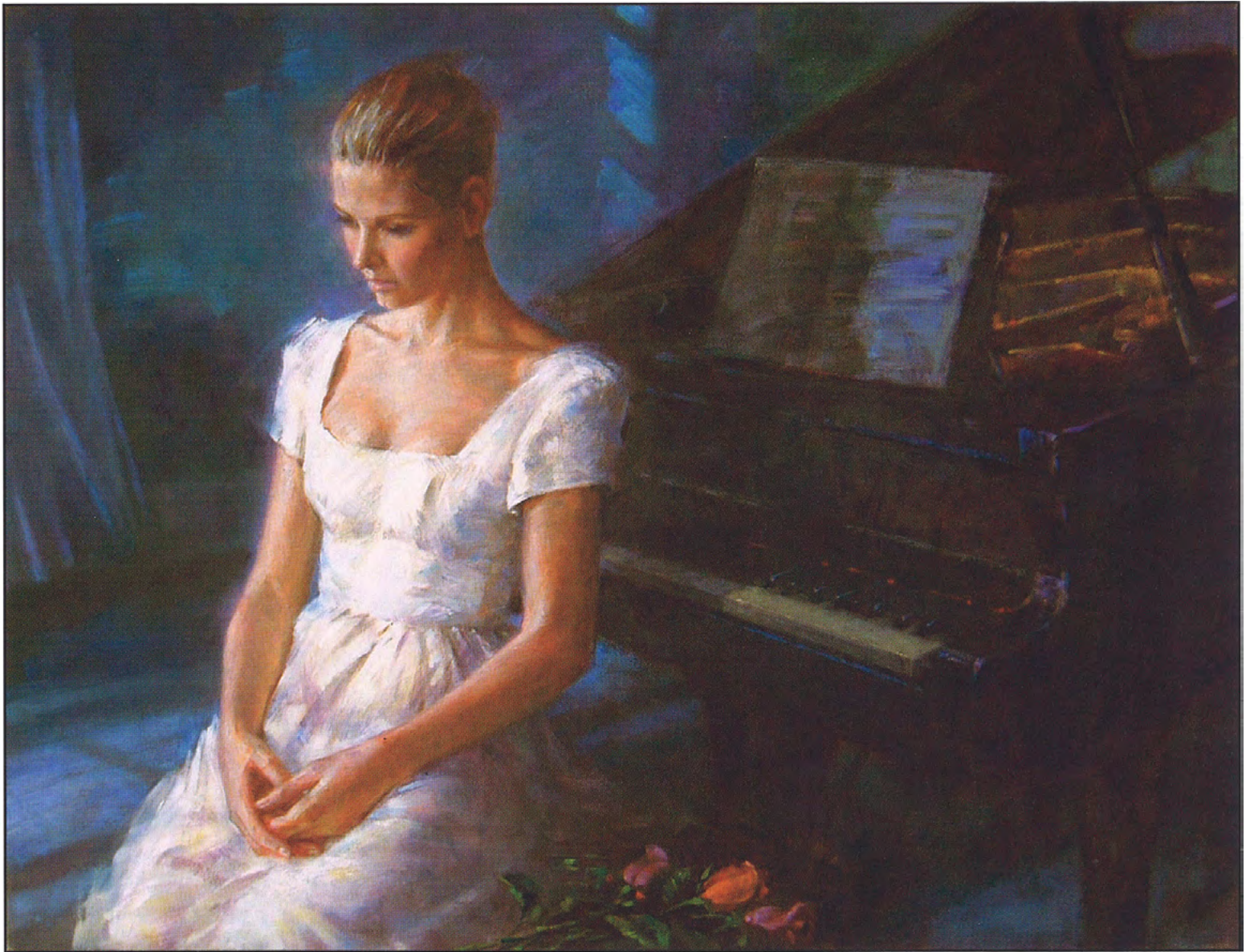


ヨーヨー・マ

YO YO MA

1997 OIL ON CANVAS 40" × 30"





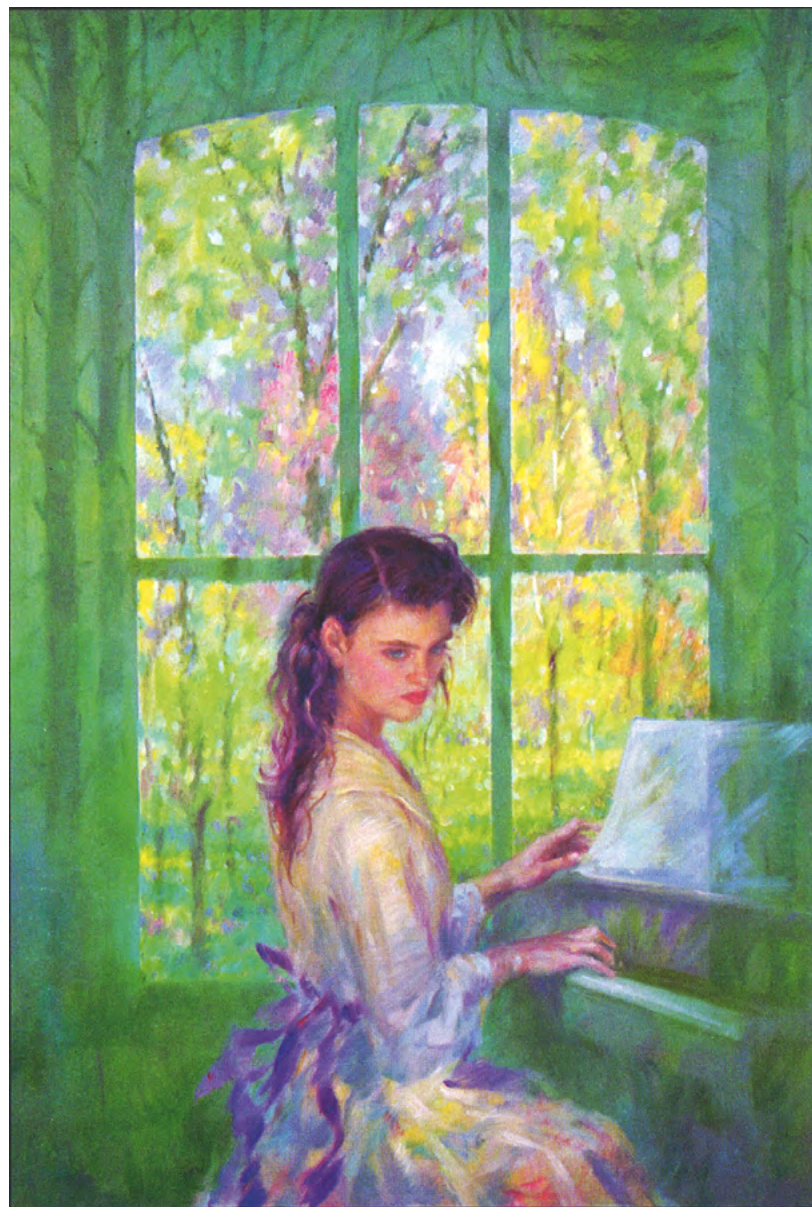
インプロンプトゥス

---

IMPROMPTUS

1996 OIL ON CANVAS 40" × 30"





スプリング

---

SPRING

1991 OIL ON CANVAS 54" × 36"



d メジャー

---

D MAJOR

2001 OIL ON CANVAS 40" × 24"



*Just as man of the greatest conductors of the world become one with Beethoven and Brahms, I too interpret the music in my own way. This painting, "Prelude", is the result of my emotional interpretation of this music through color, form, and visual composition.*

*The title "Prelude" refers to a beginning. This beginning is symbolic because these great composers represented the historical beginnings of that special and powerful relationship between a conductor and his symphony that contemporary listeners experience today. But this title, and this painting, are also symbolic to me because i have just begun to paint what will be a tremendous outpouring of my interpretations of some of the world's greatest music.*





プレリュード

---

PRELUDE

1991 OIL ON CANVAS 42" × 42"



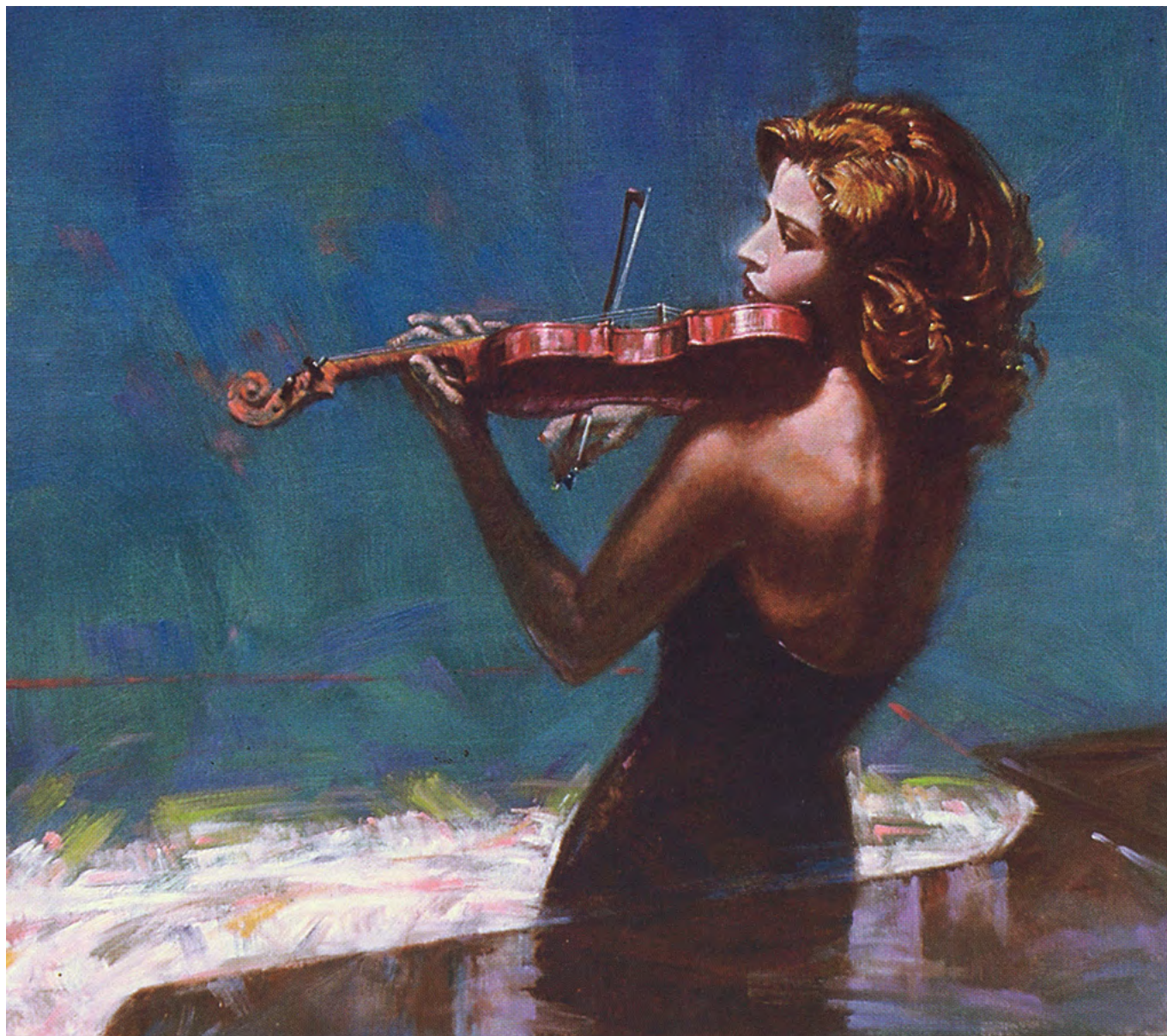


メヌエット

MINUETE

1993 OIL ON CANVAS 48" × 34"





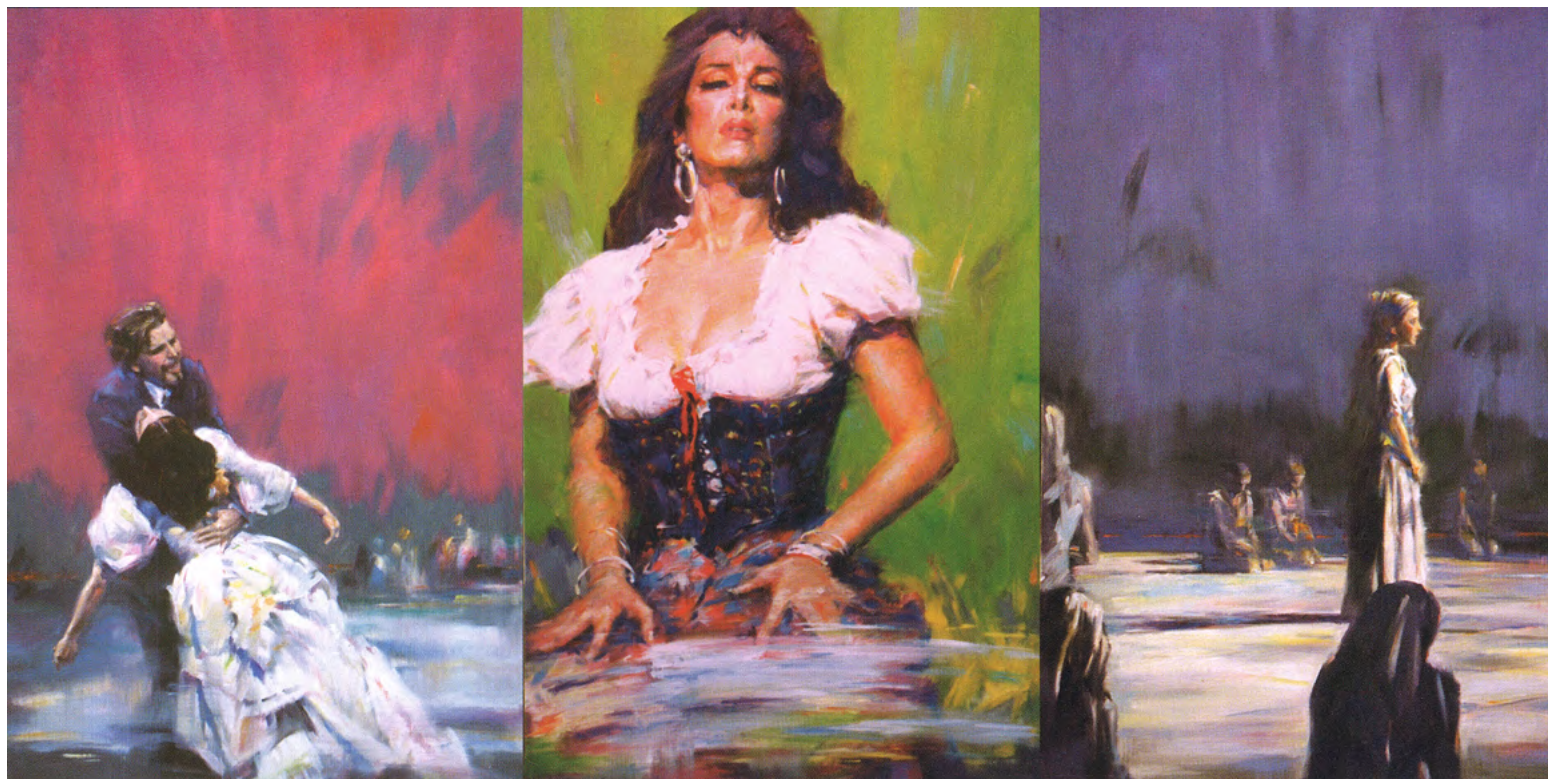
ソナタ

---

SONATA

1996 OIL ON CANVAS 30" × 26"





カルメン

---

CARMEN

1992 OIL ON CANVAS 72" × 36"



オーバチュア

---

OVERTURE

2003 OIL ON CANVAS 28" × 28"







ジャズ

---

*Jazz*

*""It took me 10 years of study  
and practice to work up to  
what I wanted to play in this  
performance. How can she  
expect to listen to five minutes  
and understand it?"*

*If you understood everything I  
said, you'd be me"*

*- Miles Davis*



モンダージュ マイルス

---

MONTAGE MILES

1995 OIL ON CANVAS 60" × 22"





ブルークール

---

BLUE COOL

1993 OIL ON CANVAS 40" × 30"





レッドホット

RED HOT

1993 OIL ON CANVAS 40" × 30"





5 2 番街

---

52ND STREET

1993 OIL ON CANVAS 52" × 30"





オータムブルース

---

AUTUMN BLUES

1993 OIL ON CANVAS 72" × 28"





トリオ

TRIO

1993 OIL ON CANVAS 40" × 30"





ビバップ

BEBOP

1992 OIL ON CANVAS 48" × 36"



ポップ

---

POP

1993 OIL ON CANVAS 36" × 36"





サッチモ

---

SATCHMO

1993 OIL ON CANVAS 48" × 30"



ワンマン トウ ウォッチ

---

ONE MAN TO WATCH

1995 OIL ON CANVAS 60" × 30"





ワンマン トウ ウォッチ

---

ONE MAN TO WATCH

1995 OIL ON CANVAS 60" × 30"





インスピレーション

---

INSPIRATION

1995 OIL ON CANVAS 26" × 36"





ドリームノート

---

DREAM NOTE

1991 OIL ON CANVAS 52" × 26"





コロラトゥーラ

---

COLORATURA

1991 OIL ON CANVAS 36" × 36"





レナ

LENA

1997 OIL ON CANVAS 42" × 28"

*"A hot breeze comes through  
the door across the stage and  
pushes out into the evening air  
carrying the sounds of Bebop  
followed by the bright flashy  
explosions of the Avant-garde.  
He blow his respect to the past  
and then bares his young soul  
composing original riffs for the  
next century. Sweat mixes with  
history in the spectrum of color,  
which swirls around his body  
and then grabs the sultry  
night's attention."*





サルトリー

---

SULTRY

1992 OIL ON CANVAS 42" × 42"

*In the still of night the quiet is  
softly broken only by his  
improvisations. This is a private  
conversation in which his memory  
separates the body and soul from  
our world. It is his language  
spoken through only the fingers. I  
am a witness in the shadows, near  
slumber, but awakened by the sad  
yet lovely songs which drift into my  
midnight.*





ミッドナイト

---

MIDNIGHT

1992 OIL ON CANVAS 34" × 34"





ウイントン

---

WYNTON

1995 OIL ON CANVAS 40" × 26"





オーバー ザ レインボウ

---

OVER THE RAINBOW

1992 OIL ON CANVAS 40" × 30"



コルトレーン

---

COLTRANE

1999 OIL ON CANVAS 20" × 22"





ホーキンス

---

HAWKINS

1999 OIL ON CANVAS 22" × 26"



オールモストブルー

---

ALMOST BLUE

1994 OIL ON CANVAS 34" × 36"





オールモストホット

---

ALMOST HOT

1994 OIL ON CANVAS 34" × 36"





バレエ

---

*Ballet*

*"The audience grows silent. Rich burgundy velvet drapes slowly pull back to reveal the silhouette of an elegant figure. Her tall slender form stands like a rose at center stage. A satin slipper delicately touches down as she bows her head and awaits for the first cue. The soft melody begins like a subtle breeze. Her head rises and turns slowly towards stage right, opening her eyes to meet the gaze of he who walks with quiet yet powerful steps towards her. The dancers speak through movements. Emotions are communicated through their dance."*





ザ トリーム

---

THE DREAM

2001 OIL ON CANVAS 28" × 34"



ブルーバード

---

BLUE BIRD

2002 OIL ON CANVAS 24" × 30"



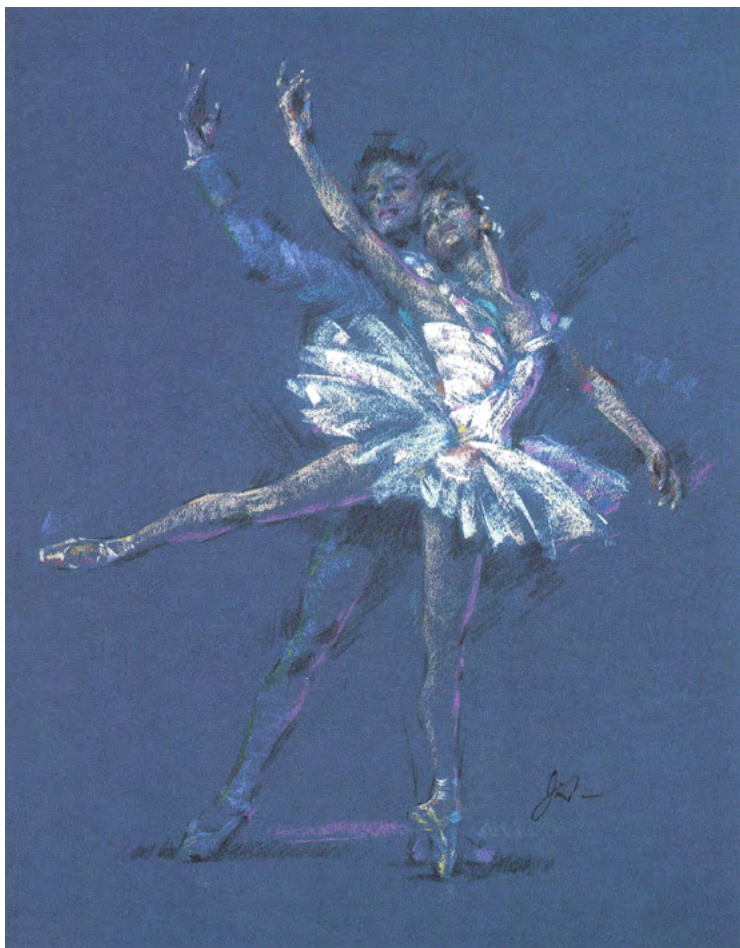


レシルフィード

---

LES SYLPHIDES

2001 OIL ON CANVAS 24" × 30"



グランド

GRAND

2001 PASTEL ON PAPER 18" × 22"



ポーズ

POSE

2001 PASTEL ON PAPER 18" × 22"





ミニユイ コーダ

MINUIT CODA

2001 PASTEL ON PAPER 18" × 22"



タン ド ポワソン

TEMP DE POISSON

2001 PASTEL ON PAPER 18" × 22"



パン ド ドゥ

---

PAS DE DEUX

2001 PASTEL ON PAPER 18" × 22"



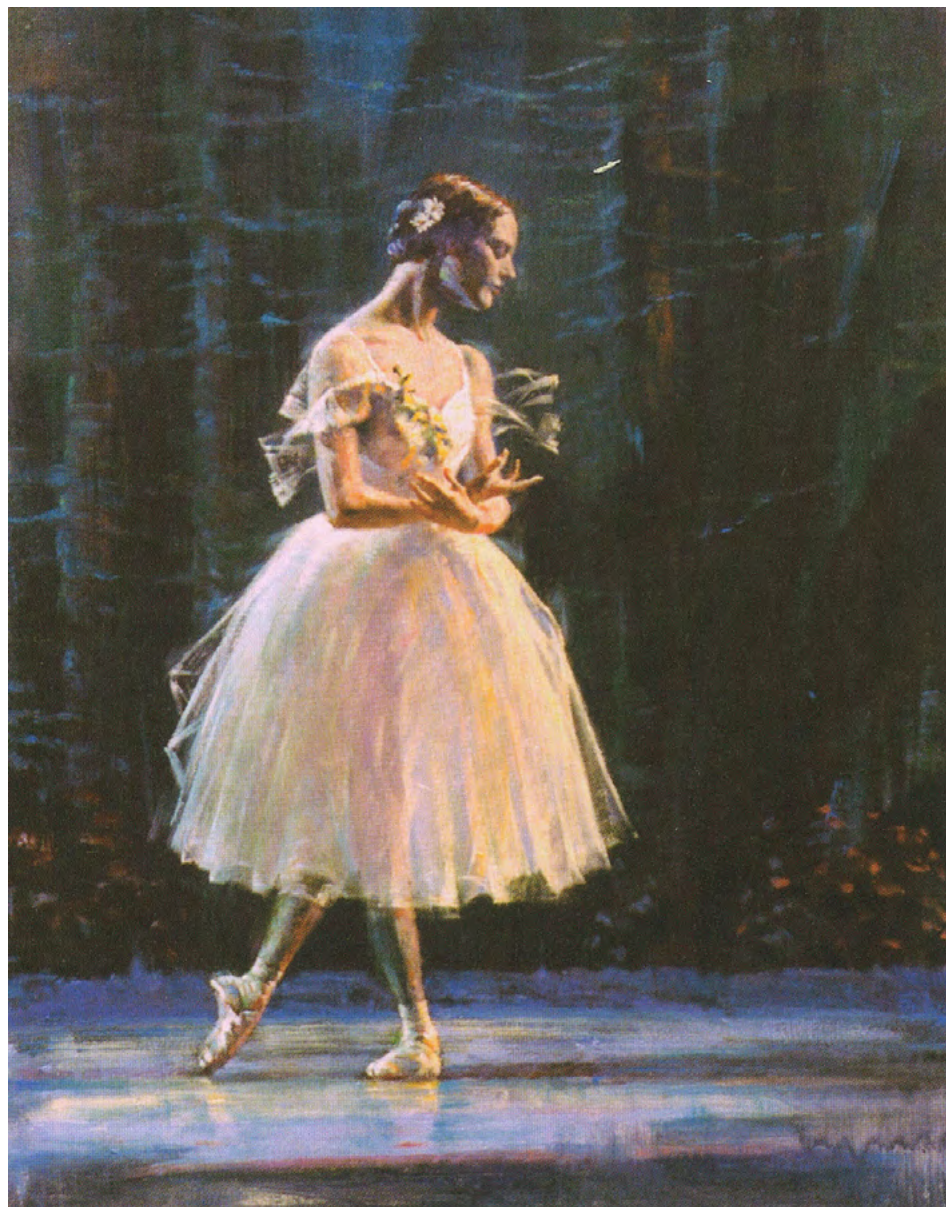


ラブシーン

LOVE SCENE

1996 PASTEL ON PAPER 22" × 18"





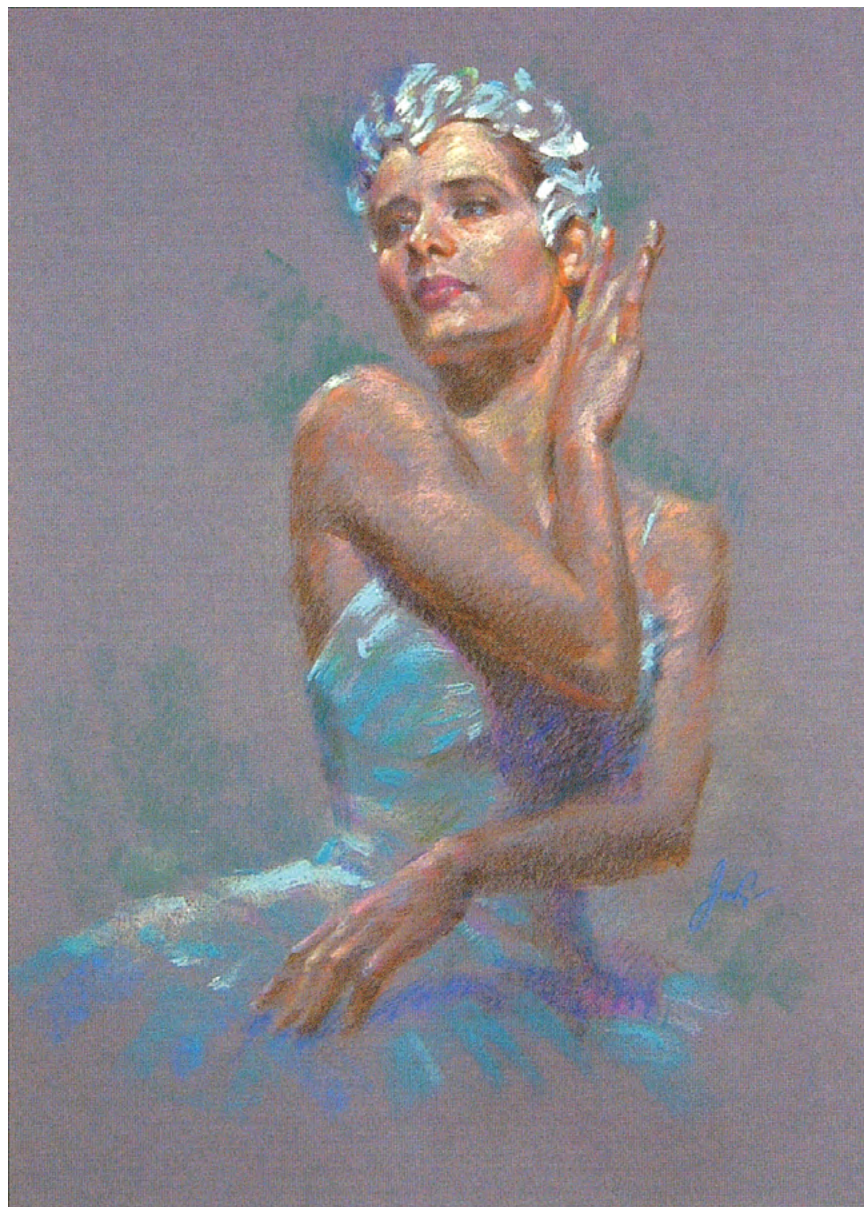
ジゼル

---

GISELLE

1998 OIL ON CANVAS 22" × 28"



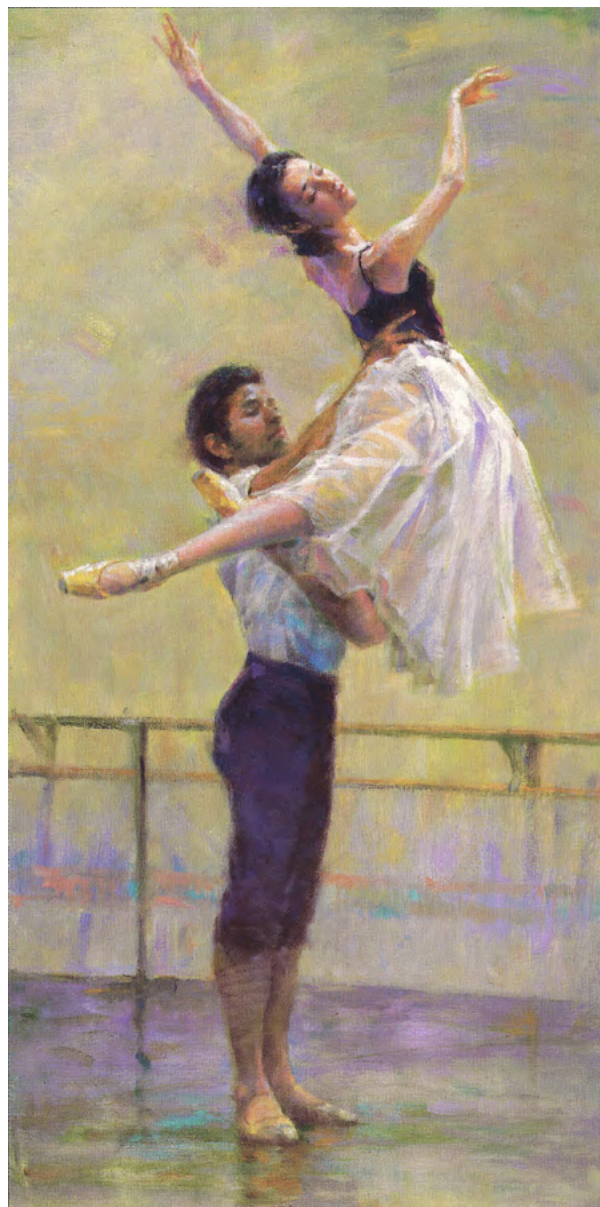


オデット

---

ODETTE

2001 PASTEL ON PAPER 18" × 22"



リハーサル

---

REHEARSAL

2002 OIL ON CANVAS 24" × 48"





スワン

---

SWAN

2001 OIL ON CANVAS 20" × 34"

## **Biography**

1953 - Born in Shanghai, China  
1982 - Graduated from China National Academy of Fine Art  
1984 - Teacher of Fine Arts and Design, Shanghai University  
1987 - Designer and Artist, Oh-Ami, Inc., Tokyo, Japan  
1989 - Graduate Studies at United States International University,  
San Diego, California

## **Selected One Man Exhibitions**

~ Mitsukoshi Art Museum ,Tama Center, Japan, 2002  
~ Mitsukoshi Gallery, Sapporo, Japan, 2002  
~ Kim Art Gallery, Irvine, California, 2000  
~ Winter Holiday Tour, Tokyo, Okinawa, Japan, 1999  
~ Imavision Gallery, Taipei, Taiwan, 1998  
~ Winter Holiday Tour, Hiroshima, Nagoya, Tokyo, Japan, 1996-97  
~ Planet Hollywood, Hong Kong, 1995  
~ J.M. Porters Kansas City, Missouri, 1994  
~ Contemporary Fine Arts Gallery, La Jolla, California, 1993  
~ Tower Records Gallery, Hollywood, California, 1993  
~ Annual "Premier Evening "fund raising event to benefit the B.E.T.A.  
Fund and 7he Nashville Institute for the Arts, sponsored by Sony  
Music and A.S.C.A.P., 1993  
~ Artes de le Monde, Ginza District, Tokyo, Japan, 1992  
~ Studio of Long Grove, Long Grove, Illinois, 1992  
~ Groce-Rock Gallery, San Diego, California, 1991

## **Selected Group Exhibitions**

~ Artist from America, Shanghai Grand Theater Gallery, Shanghai,  
China, 2002  
~ New York Art Expo, Platinum Section, New York, New York, 2002  
~ "Tresors Fine Art & Antiques Exhibition' Singapore, 1997  
~ Contemporary Chinese Artists, Presented by KPBS Public  
Broadcasting & Contemporary Fine Arts Gallery, La Jolla, California,  
1996  
~ Montclair Jazz & Heritage Festival, "The United States Post Office"  
Salutes the Legends of American Music, Montclair, New Jersey, 1995  
~ Art Asia international Fine Art & Antique Fair, Hong Kong, 1994  
~ New York Art Expo, Platinum Section, New York, New York, 1994  
~ International Spring Fair, Birmingham, England, 1994  
~ New York Art Expo, Images 93, New York, New York, 1993  
~ Frankfurt Fair, Frankfurt, Germany, 1992  
~ Sister City Traveling Exhibition, San Diego, California, Yokohama,  
Japan, Tijuana, Mexico, 1992  
~ New York Art Expo, Images 92, New York, New York, 1992  
~ Gallery Show, Birmingham, England, 1991  
~ Kam Exhibition, Shibuya Gallery, Tokyo, Japan, 1988

## **Selected Permanent Collection**

~ Charlie Parker Museum, Kansas City, Missouri  
~ Miles Davis Museum, Japan  
~ Beth Israel Medical Center, New York, New York  
~ Mr. Burt Baccarach, Beverly Hills, California  
~ Mr. Alexander Bernstein, New York, New York  
~ Mr. Marvin Hamlisch, New York New York  
~ Ms. Lena Horne, New York, New York  
~ Ms. Phoebe Jacobs, New York, New York  
~ Mr. Jerry V Wittkamper, Akron, Ohio  
~ Mr. Carl M. Shustertman, Los Angeles, California  
~ Mr. Eddie Murphy, New York, New York  
~ Croce's, Ingrid Croce, San Diego, California  
~ Steinway and Sons, Boston, Massachusetts & New York New York  
~ Mr. Russ Vuich, San Diego, California  
~ Mr. Hugo Belzidsky, San Diego, California  
~ China National Art Gallery, Beijing, China

## **Special Affiliations**

~ Name is a subject of biographical record in Who's Who in the  
World by the Marquis Who's Who Publications Board  
~ Specially commissioned artist to honor Lena Horne at Lincoln  
Center to benefit the Society of Singers, presented on the occasion  
of her 80th birthday and receipt of a "Lifetime Achievement Award"  
~ Commissioned by the Miles Davis Estate to create a series of  
tributes to honor the memory of miles Davis  
~ Commissioned by The United States Post Office to create special  
edition caches to benefit the Montclair Jazz & Heritage Festival  
~ Commissioned series of tributes to honor the memory of Billie  
Holiday  
~ Commissioned series of tributes to honor the memory of Charlie  
Parker  
~ Benefiting the Louis Armstrong Educational Foundation with a  
series of specially commissioned tributes to honor the memory of  
"Satchmo" -  
~ Benefiting the Leonard Bernstein Education Through the Arts  
Funds, The B.E.T.A. Fund, with a series of specially commissioned  
tributes to honor the memory of the great "Maestro"



MUSIC SPEAKS ABOUT MY DREAMS  
MUSIC ORDERS MY LIFE

WHEN I PLAYED AS CHILD  
IT WAS WITH MOZART NIGHT AND DAY  
WHEN I STRUGGLED AS TEENAGER  
BEETHOVEN ALWAYS PUSHED ME  
WHEN I SAW LOVE THROUGH THE WINDOW  
RACHMANINOFF HAD OPENED THE CURTAIN  
WHEN I HEARD THE TRUTH ABOUT LIFE  
BRAHMS HAD SPOKEN CLEARLY

MUSIC AND ART WILL NEVER CHEAT ME  
THEY FREE THE BONDS  
LET ME SURVIVE  
AND SAVE MY LIFE

EVERYDAY

I MUST PAIN TO CONTROL THE FLOOD  
OF EMOTION  
IN MY HEART

I MUST COMPOSE MY SONGS  
USING THE MAGIC LANGUAGE  
OF ART  
BECAUSE THE MUSIC IS THE STORY  
OF MY LIFE

THERE YOU HAVE MY  
LOVE  
AND SUFFERING  
MUSIC AND ART  
PENSIVE YET SIMPLE  
MY HAPPINESS

*Jim G. Kane*

